

—
BLOQ

creative
carpet tiles



THE CREATE
MEDIUM
SMALL & LARGE



Touched by time

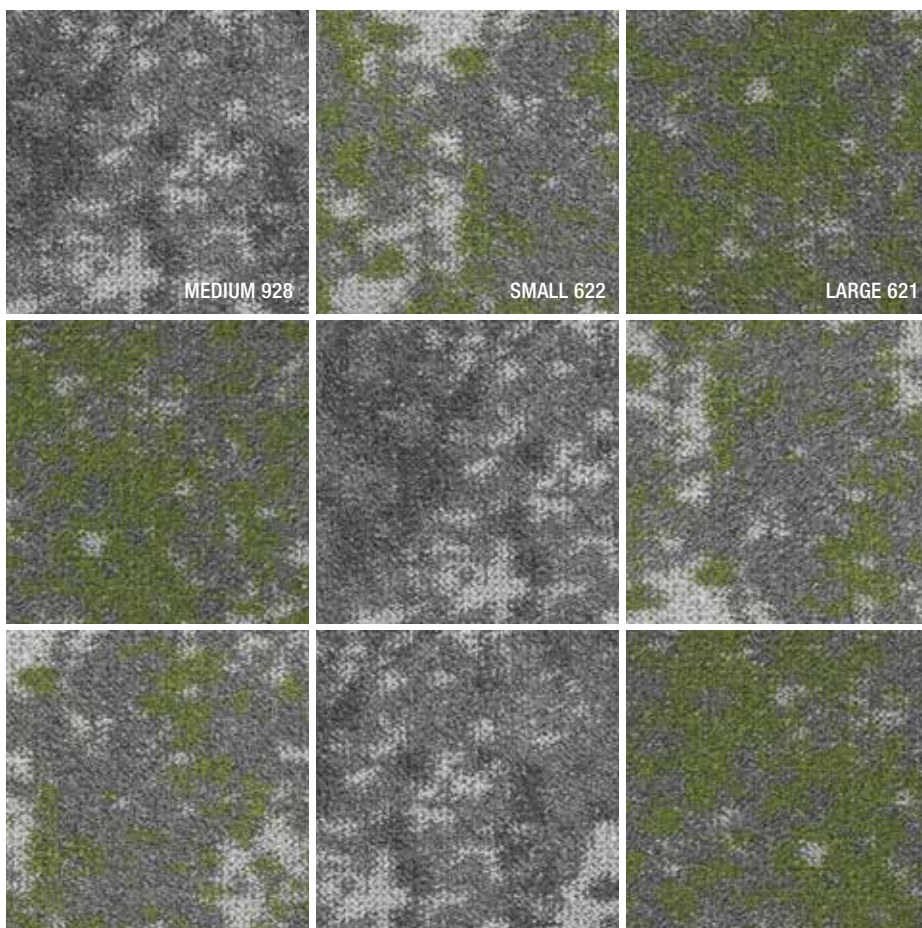


Weathering. Erosion. Characterful decay.

Abandoned factories, old barns or derelict buildings can turn into real gems over time. Just like this deserted coal mine site. Feel how time stood still and how nature is slowly taking over. This weathering is what inspired us in the design of **THE CREATE** collection. The unique look of natural decay has been caught in the different patterns of MEDIUM, SMALL & LARGE.



THE CREATE
MEDIUM, SMALL & LARGE





Inspiration
is everywhere



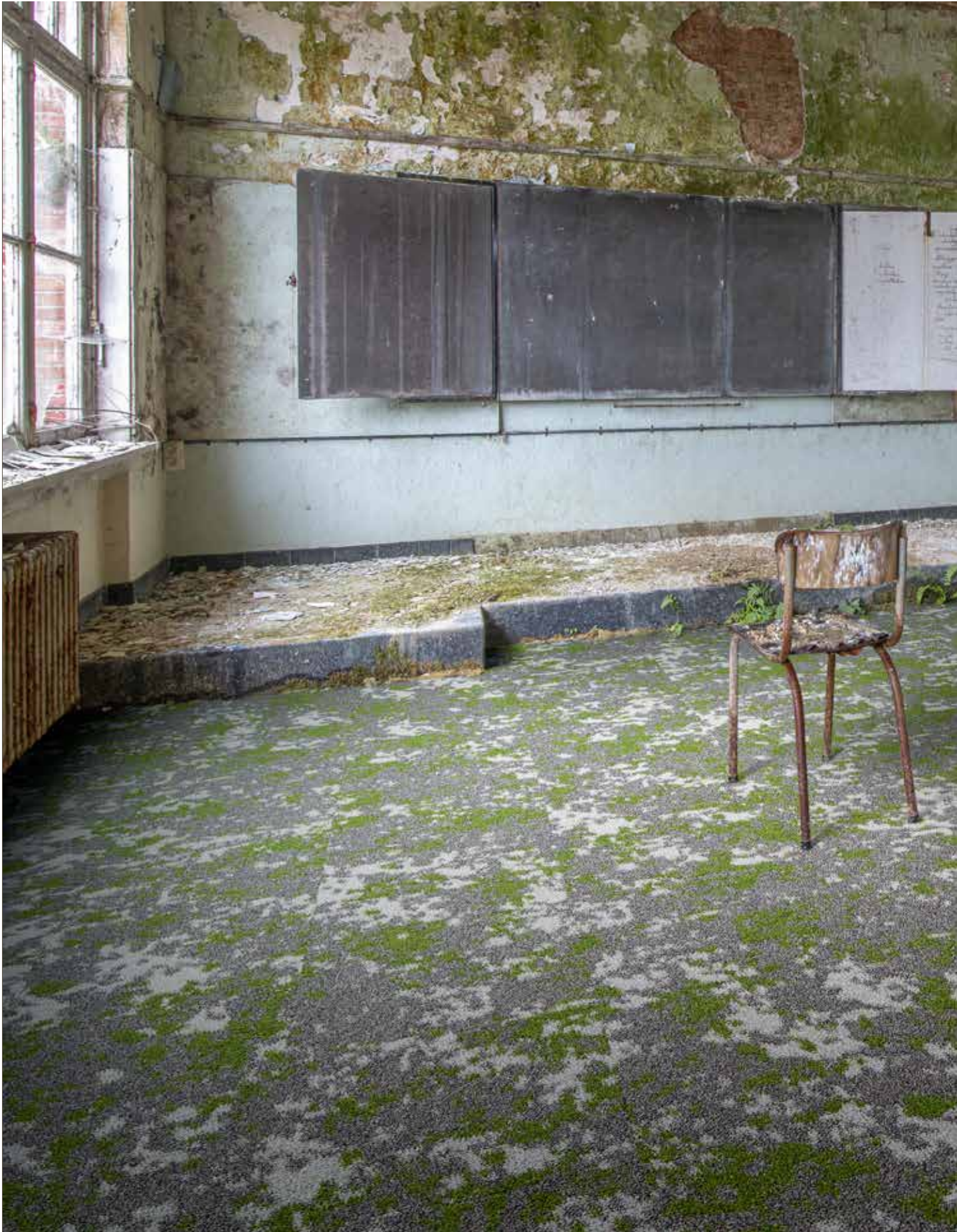
We tell a story

MEDIUM, SMALL & LARGE are part of **THE CREATE**. Collections that tell a story and add value to your space. You can place an emphasis on what you want with the different tonalities. The pattern in the carpet grows and slows back down, as if the vegetation chooses its own path.

The best inspiration is often found coincidentally in nature.



MEDIUM 928, SMALL 517, LARGE 516



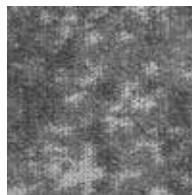


SMALL 622

Let's tell you all about it

THE CREATE is more than just a collection. It's designed to be used creatively. The collection comes in three versions: **LARGE** displays a big colour pattern, **SMALL** has subtle accents in the same accent colour and **MEDIUM** is the neutral, grey base tile. LARGE and SMALL come in six colours, with grey as a neutral undertone.

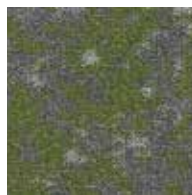
Within each colour group, you can choose three designs to play with. Complete the puzzle with just one pattern or combine two or three.



MEDIUM
the base tile
to mix & match with



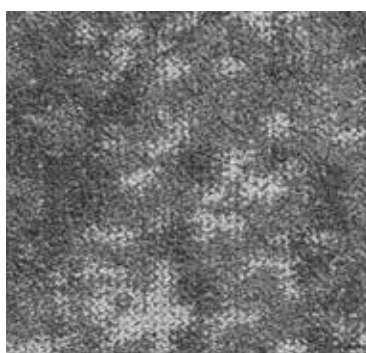
SMALL
with a small
coloured accent



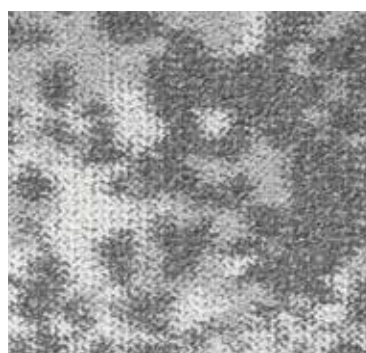
LARGE
with a large
coloured accent

MEDIUM, SMALL & LARGE colour range

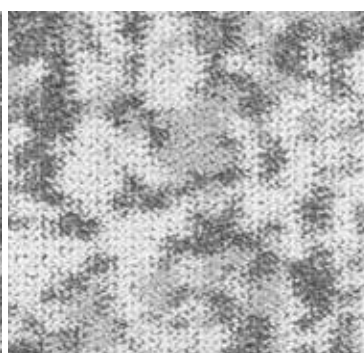
*Medium, the base tile
↓
to mix & match with*



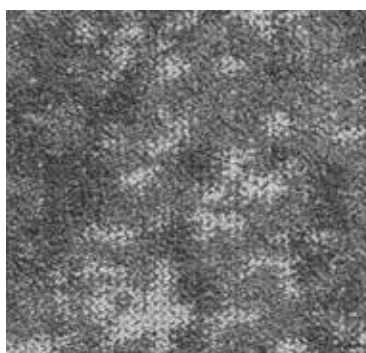
MEDIUM 928 THUNDER



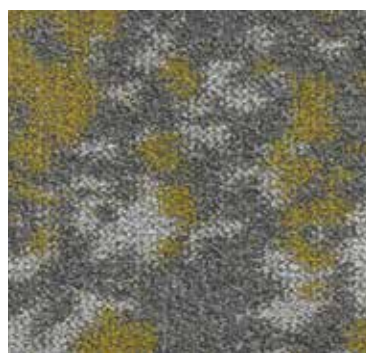
SMALL 156 SALT



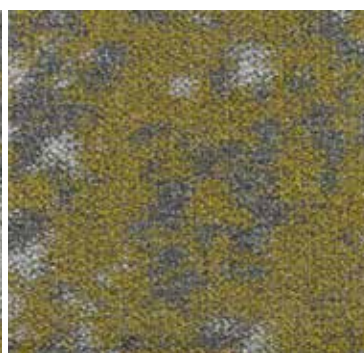
LARGE 155 RICE



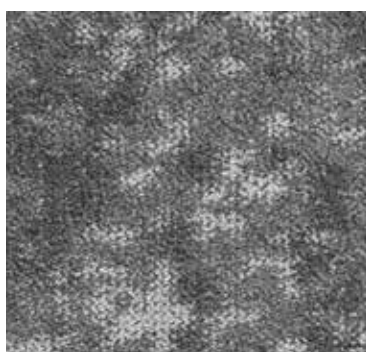
MEDIUM 928 THUNDER



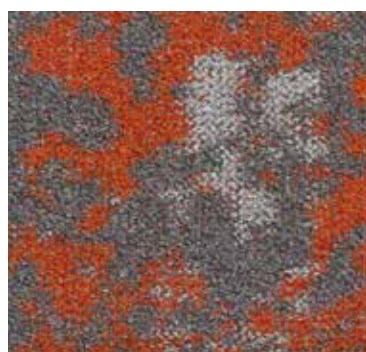
SMALL 208 HONEY



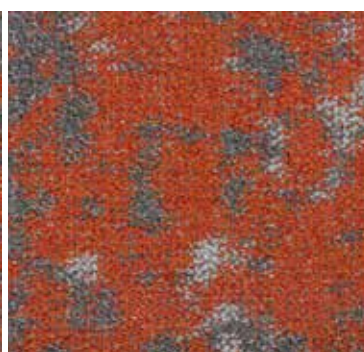
LARGE 207 DIJON



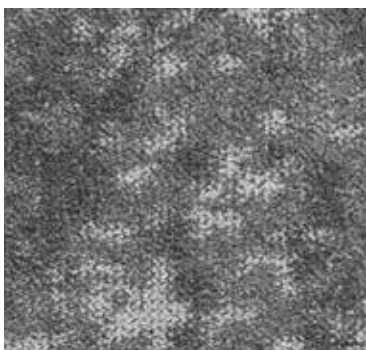
MEDIUM 928 THUNDER



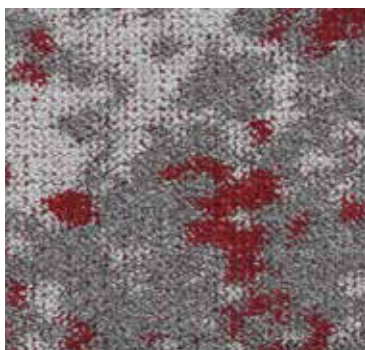
SMALL 212 TANGERINE



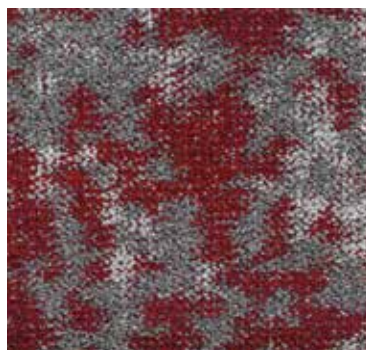
LARGE 211 PUMPKIN



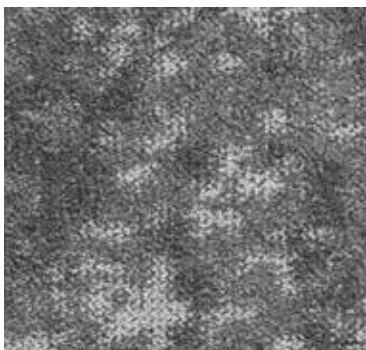
MEDIUM 928 THUNDER



SMALL 307 RUBY



LARGE 306 SCARLET



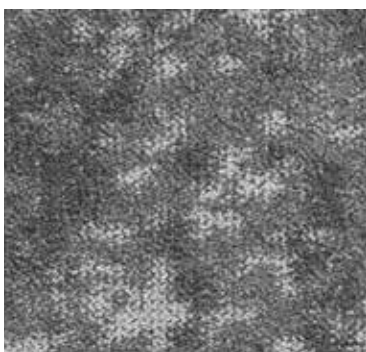
MEDIUM 928 THUNDER



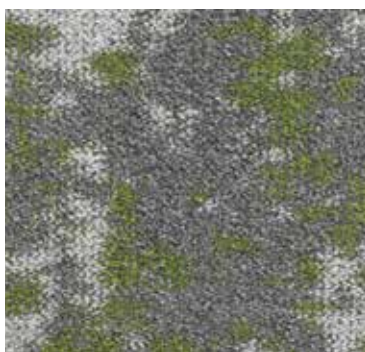
SMALL 517 PERSIAN BLUE



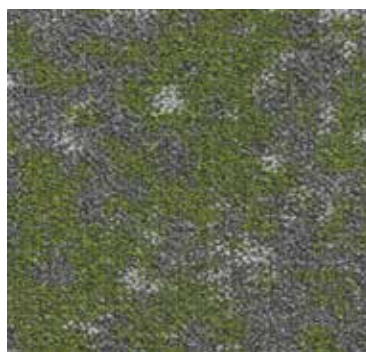
LARGE 516 ULTRAMARINE



MEDIUM 928 THUNDER



SMALL 622 FERN



LARGE 621 SPRING





MEDIUM 928, SMALL 212, LARGE 211

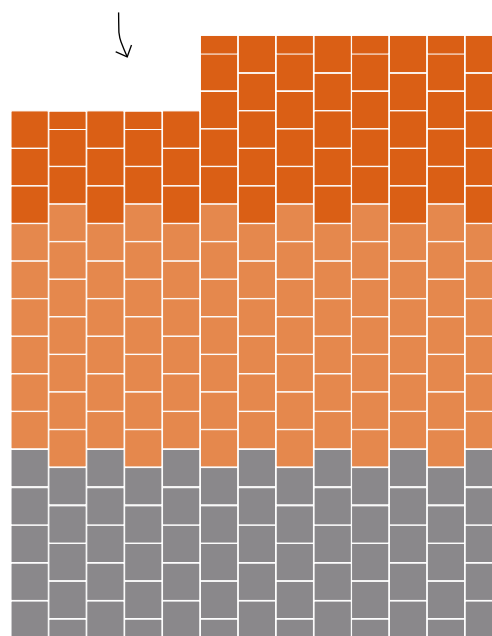
Time to play

MEDIUM, SMALL & LARGE thrive in spacious rooms, allowing you to divide the space in different areas.

Make a preliminary design and play with transitions. Combine neutral areas with coloured spaces. SMALL is the perfect changeover between MEDIUM and LARGE. In a seating area, under a table or desk: this is where LARGE is at its best.

By laying THE CREATE tiles in brick or checkerboard pattern, you create a fluid and faded transition. But there are no limits to creativity: MEDIUM, SMALL & LARGE lend themselves perfectly to various laying methods.

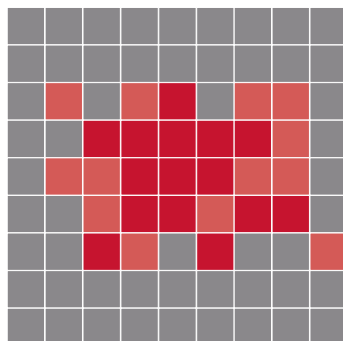
Tip: make a preliminary design of the laying method



- LARGE 211 PUMPKIN
- SMALL 212 TANGERINE
- MEDIUM 928 THUNDER

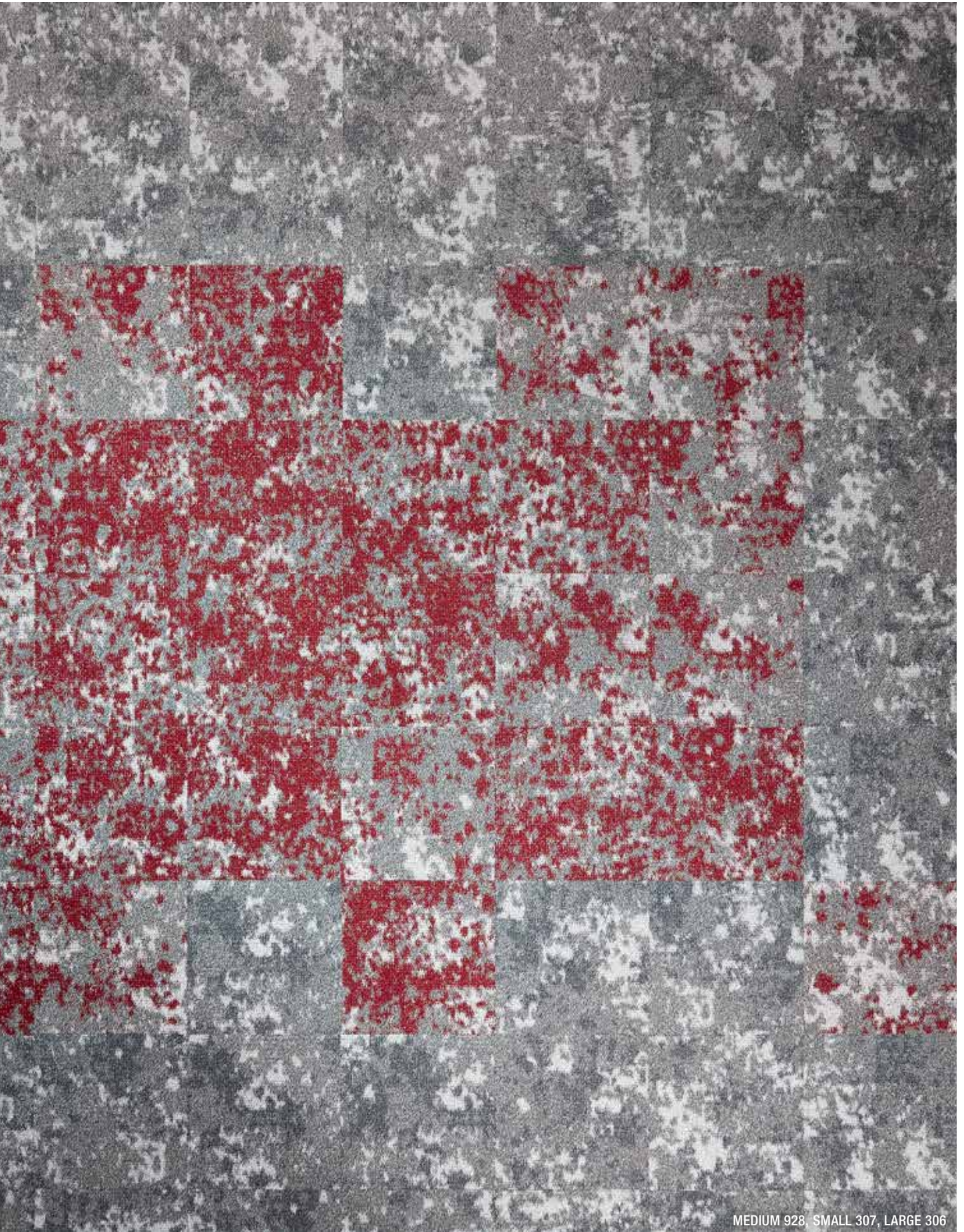


Preliminary study of the pattern



- MEDIUM 928 THUNDER
- SMALL 307 RUBY
- LARGE 306 SCARLET





MEDIUM 928, SMALL 307, LARGE 306

A photograph of a large, empty room with peeling, light-colored walls. A wooden door is visible on the right wall, and a window with a wooden frame is partially visible. The floor is covered in a dark, textured material, possibly carpet or a similar surface. The text "Large spaces are most fun" is overlaid on the left side of the image.

Large spaces
are most fun



MEDIUM 928, SMALL 156, LARGE 155

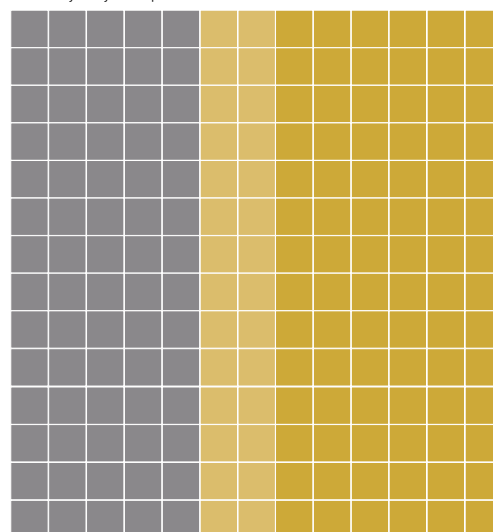




Create a corridor

You can create a corridor with one single colour. The transition can be clearly defined or more playful. The possibilities are endless.

Preliminary study of the pattern



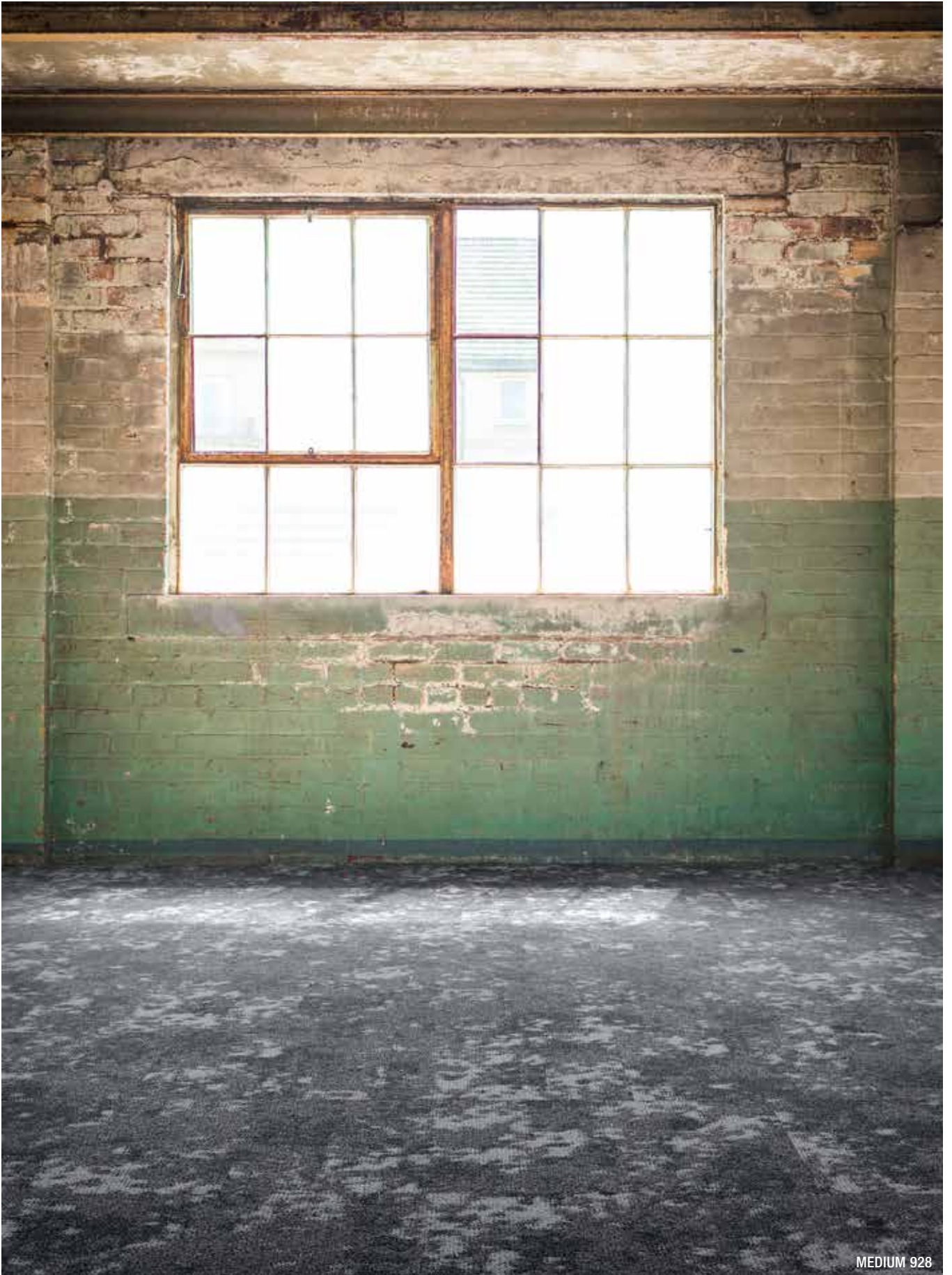
- MEDIUM 928 THUNDER
- SMALL 208 HONEY
- LARGE 207 DIJON

MEDIUM 928, SMALL 208, LARGE 207



LARGE 211





MEDIUM 928

Highlights



LONG LIFESPAN

Our durable carpet tiles have a long lifespan thanks to our solution dyed yarns, **high performance quality** and good maintenance programmes, fulfilling the **EN1307 – class 33** classification. All this results in a **15-year warranty**.



BITBACK

BLOQ uses **Bitback**, Modified Bitumen, which consists of 70% recycled content.

Tiles made with Bitback deliver great acoustic results such as **high sound absorption and insulation**, as well as **noise reduction**. Therefore carpets made with this sustainable backing contribute substantially to personal health and comfort.

LIGHT REFLECTANCE VALUES

Light Reflectance Value (LRV) is a scale that measures visible and usable light reflected from an illuminated surface. The percentage identifies how much light a colour reflects or absorbs. 0% reflects no visible light, 100% reflects all light.

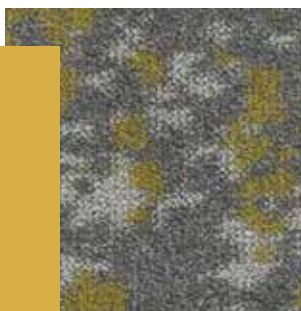
| SMALL | LRV _{av} | L |
|------------|-------------------|-------|
| 307 | 13.68 | 43.77 |
| 517 | 13.74 | 43.86 |
| 622 | 13.40 | 43.36 |
| 208 | 16.05 | 47.03 |
| 212 | 15.72 | 46.60 |
| 156 | 24.34 | 56.42 |

| MEDIUM | LRV _{av} | L |
|------------|-------------------|-------|
| 928 | 13.05 | 42.84 |

| LARGE | LRV _{av} | L |
|------------|-------------------|-------|
| 306 | 10.03 | 37.89 |
| 516 | 9.13 | 36.24 |
| 621 | 13.49 | 43.50 |
| 207 | 16.69 | 47.86 |
| 211 | 13.43 | 43.40 |
| 155 | 30.66 | 62.22 |

BLOQ

creative
carpet tiles



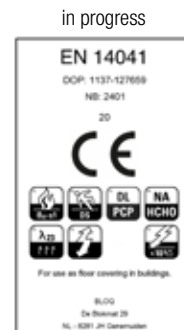
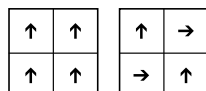
THE CREATE MEDIUM, SMALL & LARGE

SPECIFICATIONS

| | |
|-------------------------------|--|
| TYPE OF MANUFACTURE | Tufted Patterned Loop Pile 1/10" |
| ISO 2424 | |
| PILE FIBER COMPOSITION | 100% Polyamide 6 |
| ISO 2424 | Solution Dyed Nylon made by Aquafil |
| SECONDARY BACKING | Bitback, Modified Bitumen |
| ISO 2424 | 70% Recycled Content |
| DIMENSION | 50 x 50 cm |
| EN ISO 24342 | |
| PILE WEIGHT | 1 000 g/m ² |
| ISO 8543 | |
| SURFACE PILE WEIGHT | 590 g/m ² |
| ISO 8543 | |
| TOTAL WEIGHT | 5 000 g/m ² |
| ISO 8543 | |
| TOTAL THICKNESS | 8.5 mm |
| ISO 1765 | |
| PILE HEIGHT | 4.6 mm |
| ISO 1766 | |
| PILE DENSITY | 0.126 g/m ³ |
| ISO 8543 | |
| NUMBER OF TUFTS | 215 000 /m ² |
| ISO 1763 | |
| DIMENSIONAL STABILITY | ≤ 0.2% |
| ISO 2551 | |
| NUMBER OF COLOURS | LARGE: 6 SMALL: 6 MEDIUM: 1 |
| PACKAGING | Box: 16 tiles / 4 m ² Pallet: 160 m ² |

PERFORMANCE

| | |
|---------------------------------|--|
| CLASSIFICATION | 33 |
| EN 1307 | |
| LUXURY RATING | LC2 |
| EN 1307 | |
| CASTOR CHAIR RATING | A: Intensive use |
| EN 985 | |
| FIRE CLASSIFICATION | B _{fl} -s1 |
| EN 13501-1 | |
| IMPACT SOUND INSULATION | ΔL _w : 26 dB |
| EN ISO 10140-3 | |
| SOUND ABSORPTION | Frequency Hz 125 250 500 1000 2000 4000 |
| EN ISO 354 | α _s 0.01 0.03 0.10 0.22 0.36 0.46 |
| NOISE REDUCTION | α _w : 0.20 |
| EN ISO 354 | |
| PERMANENT ANTISTATIC | ≤ 2 kV |
| ISO 6356 | |
| TRANSVERSAL RESISTANCE | ≤ 1 X 10 ⁹ Ohm |
| ISO 10965 | |
| THERMAL RESISTANCE | 0.079 m ² K/W |
| ISO 8302 | |
| COLOUR FASTNESS TO LIGHT | ≥ 7 |
| EN ISO 105-B02 | |
| COLOUR FASTNESS TO WATER | ≥ 4 |
| EN ISO 105-E01 | |
| RUBBING FASTNESS | ≥ 4 |
| EN ISO 105-X12 | |
| GUT N° PRODIS | in progress |



All rights reserved to alter technical specifications.



Part of **betap**[®]

www.bloq.nl