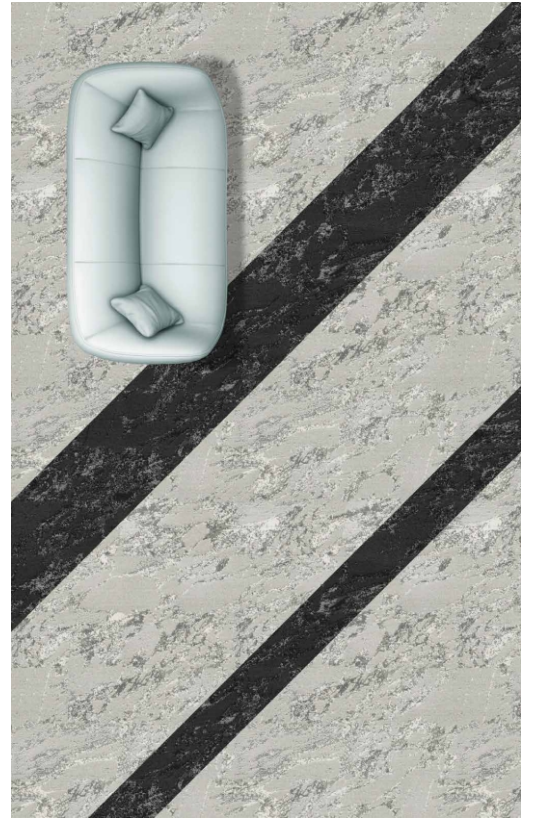


WILDLIFE
Carpet Tiles

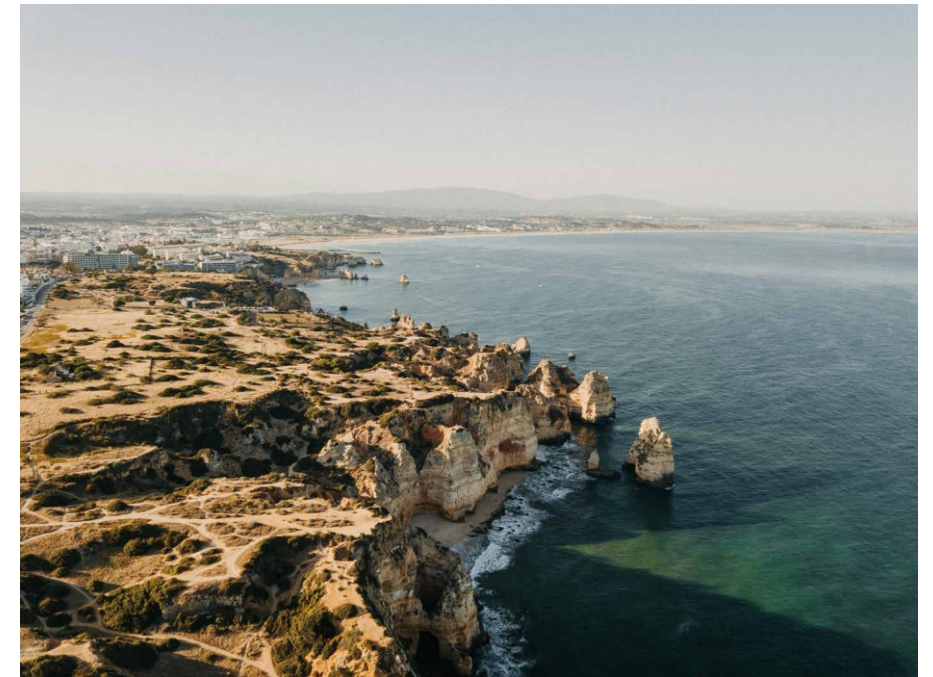


Wildlife 01



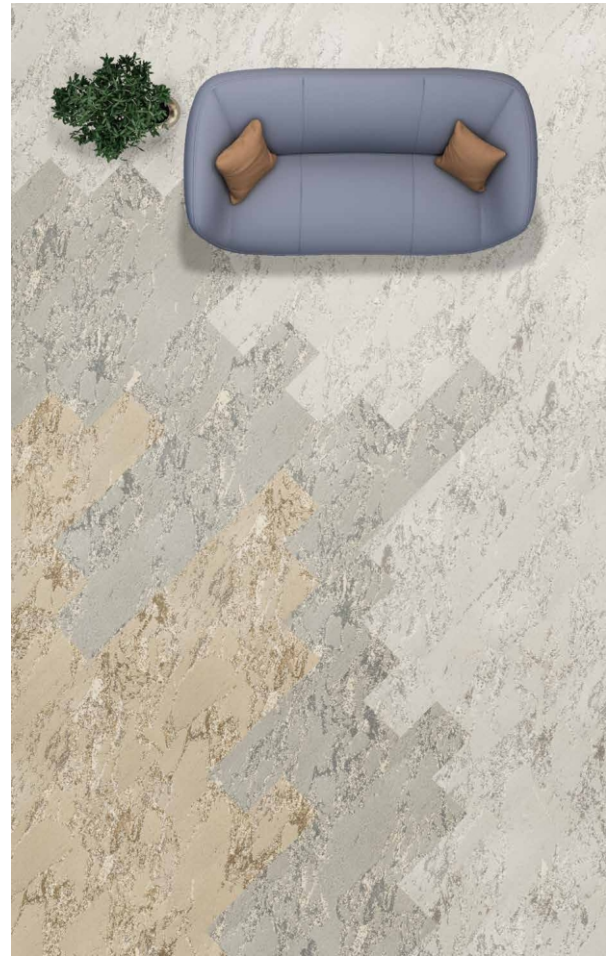


We pay more attention to environmental protection, the use of energy-saving production technology and technology to reduce energy consumption and emissions of pollutants. At the same time, the recyclability and degradability of the carpet will be an important design consideration, so that after the end of the life of the carpet can be effectively recycled and processed, reducing the impact on the environment.

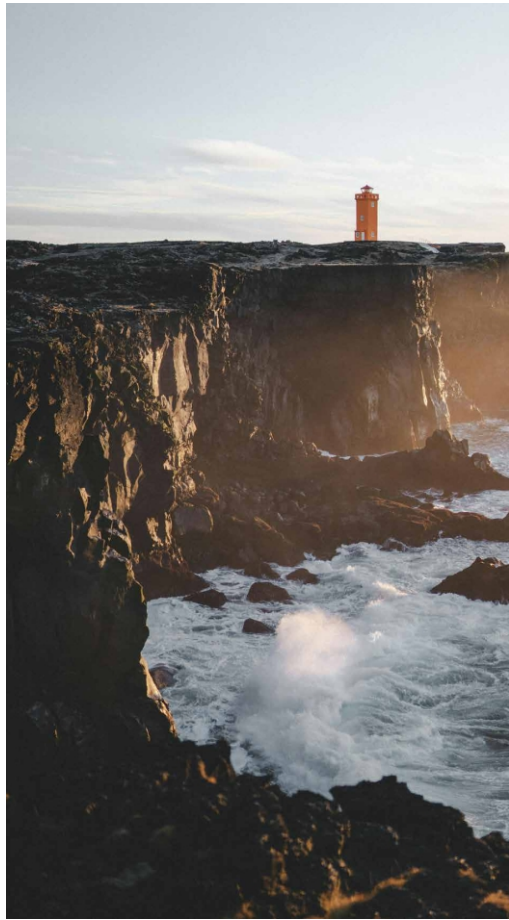


Wildlife 03



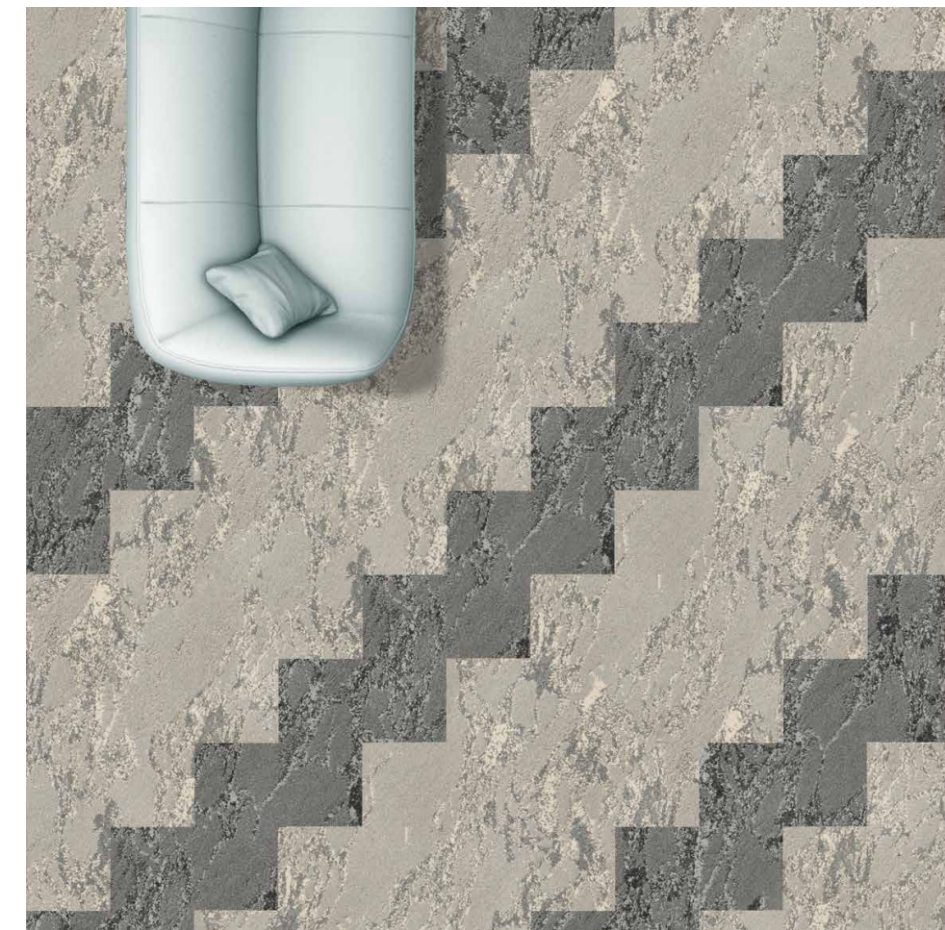


Wildlife 05



Wildlife 06





Wildlife 07



To ensure the quality of the carpet, environmental protection, flame retardant, anti-static basic performance, carpet surface use of global nylon twist yarn, each yarn do anti-fouling treatment, ensure the yarn resilience and easy cleaning of each product. Use of environmentally friendly backing of PE and PU

Wildlife 08



Wildlife 04





Integration and innovation





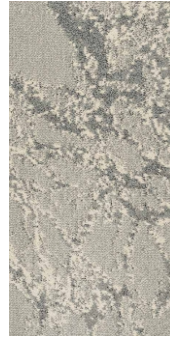
Wildilfe 01



Wildilfe 02



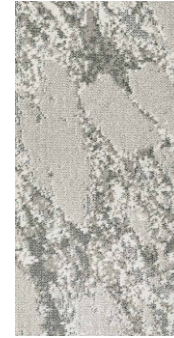
Wildilfe 03



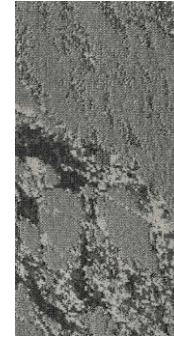
Wildilfe 04



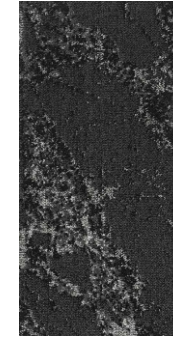
Wildilfe 05



Wildilfe 06



Wildilfe 07



Wildilfe 08

SPECIFICATION:

Face yarn:	100% Universal Nylon
Dye method:	100% Solution dyed
Gauge:	1/10
Pile weight:	1200±100g/m ² (±5%)
Total weight:	3530g/m ² (±5%)
Pile height:	6/3/2mm
Total height:	11mm (±1mm)
Backing:	PU
Size:	45.72cmx91.44cm(18"x36")
Dimensional stability:	≤0.2%
Packaging box:	12 tiles/5.016 m ²

PERFORMANCE

Classification:	33
Castor chair rating:	A: intensive use
Fire classification :	Class 1 (ASTM E648)
Stain Resistance :	Grade 8(AATCC 175)
Permanent antistatic:	≤2kv (GB/T 18044-2008)
Impact sound insulation:	ΔL _w :26 dB
Sound absorption:	Frequency Hz:125 250 500 1000 2000 4000 α _s 0.01 0.05 0.08 0.22 0.34 0.44
Noise reduction:	α _w :0.20
Colour fastness to light:	5 grade QB/T 2755-2005
Colour fastness to water:	4-5 grade QB/T 2755-2005
Rubbing fastness:	4-5 grade QB/T 2755-2005
Indoor air quality:	(GB18587-2001 A grade) TVOC ≤0.500mg/m ³ h Formaldehyde≤ 0.050mg/m ³ h Styrene≤ 0.400mg/m ³ h 4-phenylcyclohexene≤ 0.050mg/m ³ h

