



SHADOW  
Carpet Tiles



It is a follower of light, but at a distance. It is the warmth behind the blazing, is the objective clear world that people are fascinated by the vague unknown. It is also standing in the distance silently watching the long-term company. It is light and shadow.



Shadow201

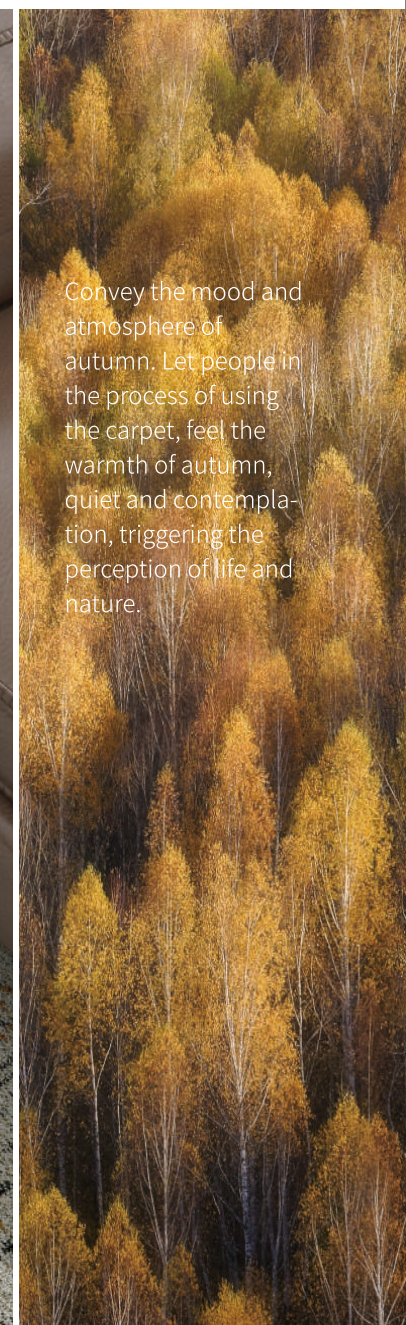


Shadow200





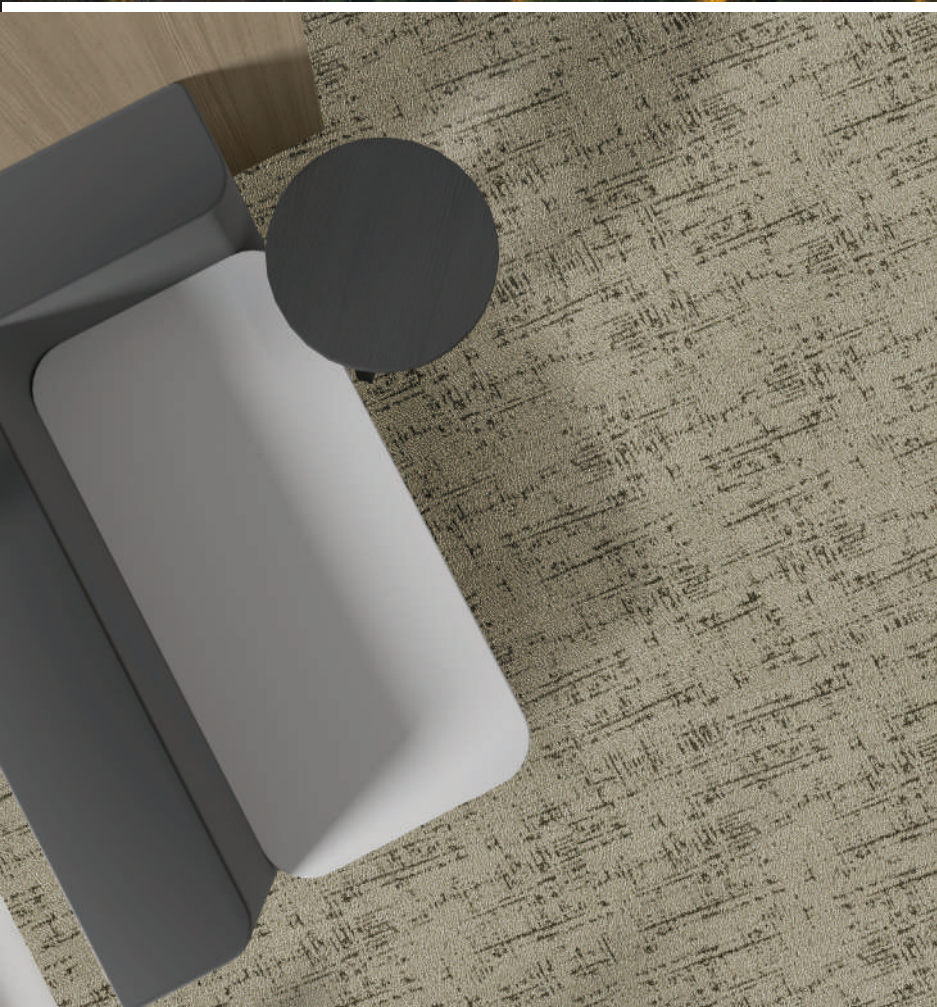
Shadow100



Convey the mood and atmosphere of autumn. Let people in the process of using the carpet, feel the warmth of autumn, quiet and contemplation, triggering the perception of life and nature.

Shadow101





Shadow300

Shadow 301





Shadow400



Shadow 401

Autumn leaves appear warm and rich colors, such as gold, orange-red, brown, etc. . These colors are not only compared with each other and harmonious unity, for the carpet design provides an excellent color combination. You can choose the red maple leaves, Gingko's golden yellow, brown indus as the main color, to create a strong atmosphere of autumn. Consider color gradients and transitions, imitation of leaves in different light color changes, so that the carpet more layered and three-dimensional sense.







Shadow 500

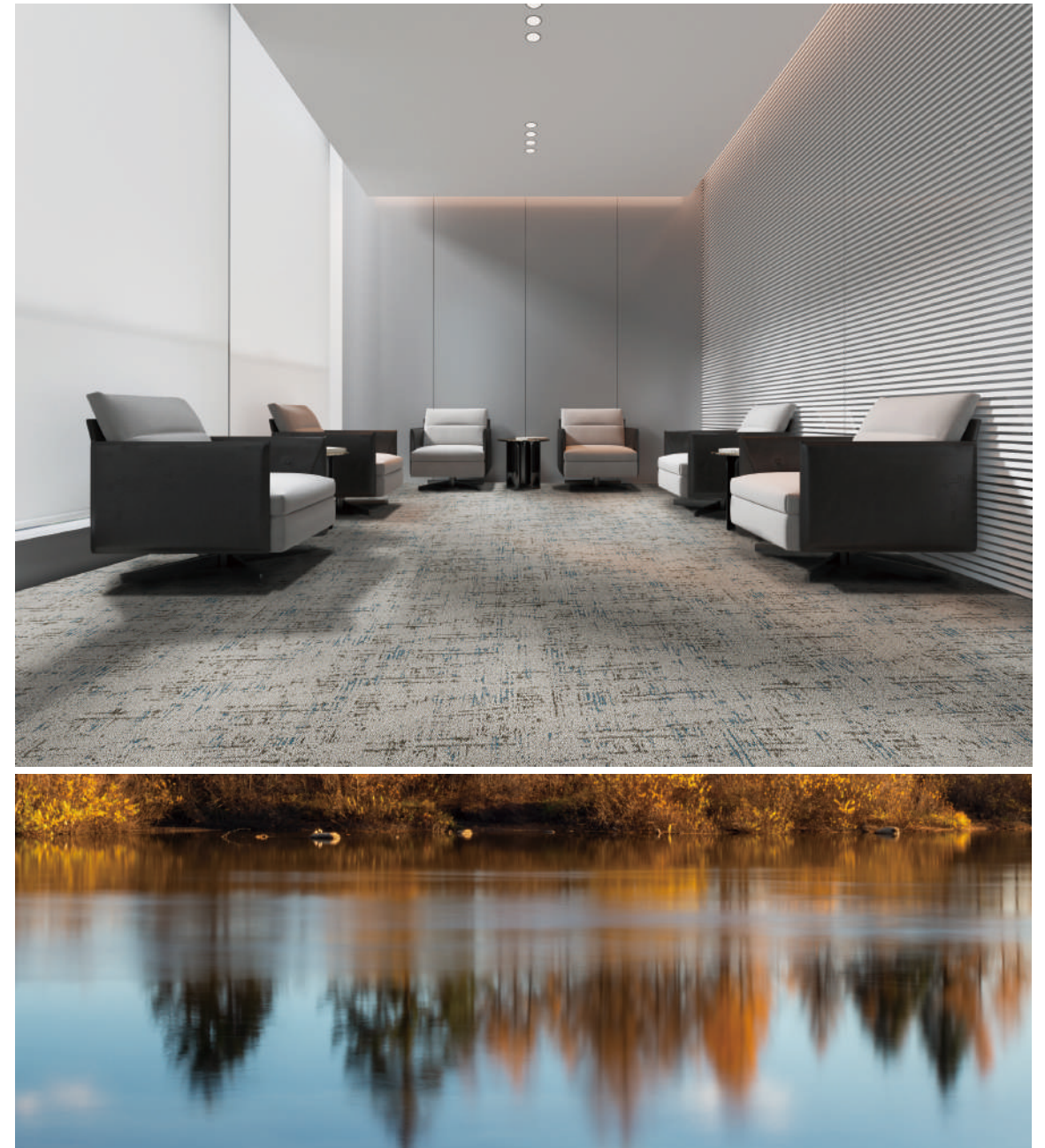


Shadow 501





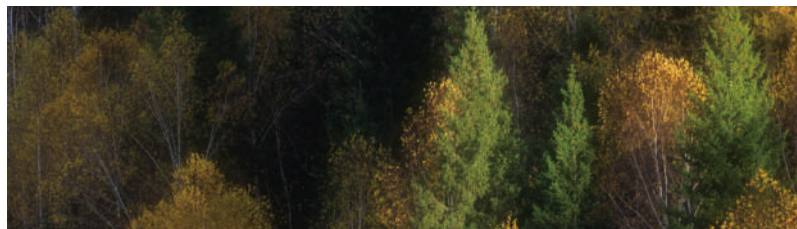
Shadow 600



Shadow 601



Autumn leaves as the theme, the beauty of nature and art combined. Through the observation and perception of fallen leaves, extract its most attractive elements, used in carpet design, so that the carpet has both a natural sense of reality, and artistic expression.



Shadow701

Shadow 700





Shadow800

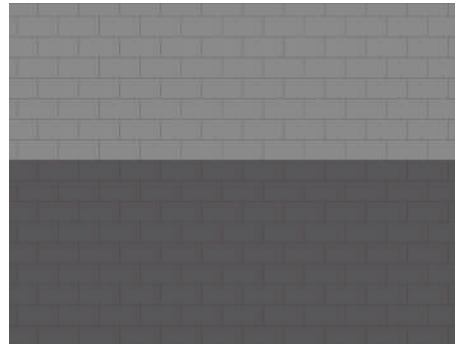
The shapes of the fallen leaves are incorporated into the design of the carpet. The different shapes of the fallen leaves are combined to create a creative composition. The performance of the leaves curl, broken and other natural state, reproduce the texture and texture of the leaves.



Shadow801

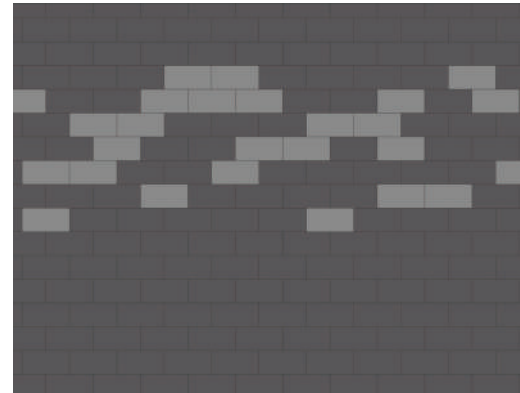






Shadow501

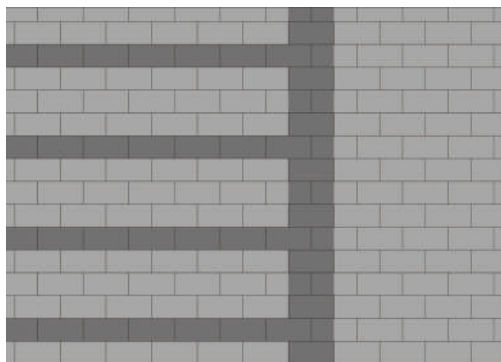
Shadow801



Shadow100

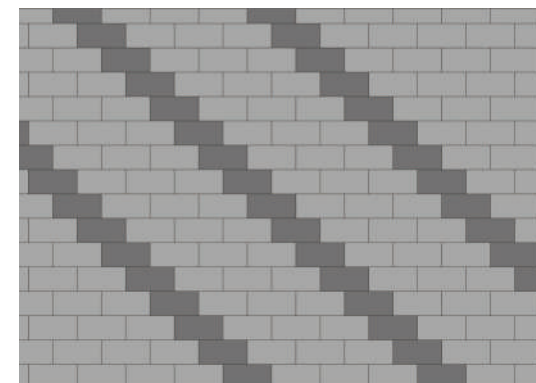
Shadow101



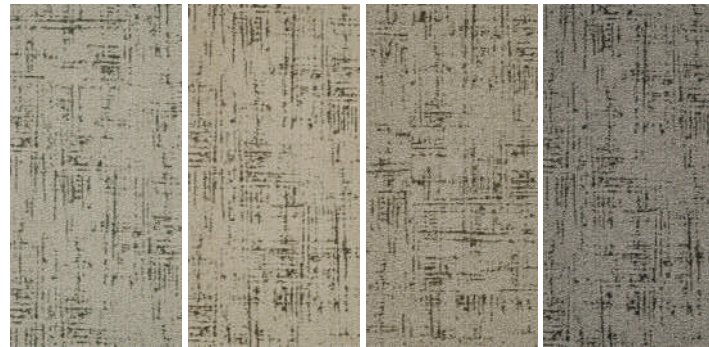


Shadow700  
Shadow301

Shadow 500  
Shadow501







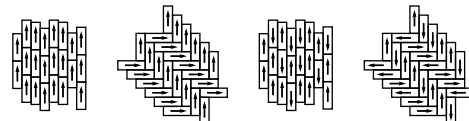
Shadow100   Shadow200   Shadow300   Shadow400



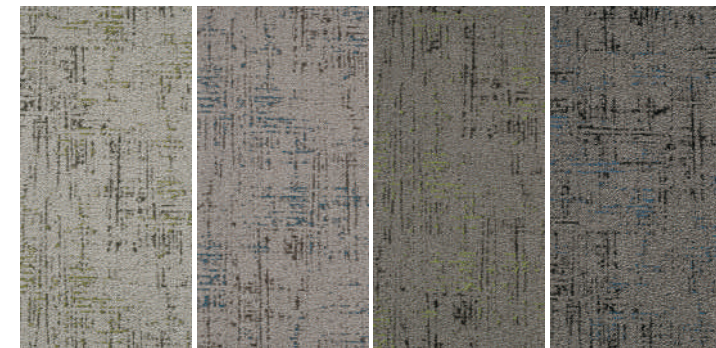
Shadow101   Shadow201   Shadow301   Shadow401

### SPECIFICATION:

Face yarn:	100% Universal Nylon
Dye method:	100% Solution dyed
Gauge:	1/10
Pile weight:	700g/m <sup>2</sup> (±5%)
Total weight:	5300g/m <sup>2</sup> (±5%)
Pile height:	4.5mm (±0.5mm)
Total height:	7mm( ±0.5mm )
Backing:	PVC
Size:	45.72cmx91.44cm(18"x36")
Dimensional stability:	≤0.2%
Packaging box:	12 tiles/5.016 m <sup>2</sup>



Shadow 500   Shadow600   Shadow700   Shadow800



Shadow501   Shadow601   Shadow701   Shadow801

### PERFORMANCE

Classification:	33
Castor chair rating:	A: intensive use
Fire classification :	Class 1 (ASTM E648)
Stain Resistance :	Grade 8(AATCC 175)
Permanent antistatic:	≤2kv (GB/T 18044-2008)
Impact sound insulation:	ΔL <sub>w</sub> :26 dB
Sound absorbtion:	Frequency Hz:125   250   500   1000   2000   4000 α <sub>s</sub> 0.01   0.05   0.08   0.22   0.34   0.44
Noise reduction:	α <sub>w</sub> : 0.20
Colour fastness to light:	5   grade   QB/T 2755-2005
Colour fastness to water:	4-5 grade   QB/T 2755-2005
Rubbing fastness:	4-5 grade   QB/T 2755-2005
Indoor air quality:	
(GB18587-2001 A grade)	TVOC   ≤0.500mg/m <sup>2</sup> h Formaldehyde ≤ 0.050mg/m <sup>2</sup> h Styrene ≤ 0.400mg/m <sup>2</sup> h 4-phenylcyclohexene ≤ 0.050mg/m <sup>2</sup> h